



X-62A VISTA: AI-Controlled Fighter Jets Are Dogfighting With Human Pilots Now
(December 2022 - April 2024)

NewsOpinionSportCultureLifestyle

UKUS politicsWorldClimate crisisMiddle EastUkraineFootballNewslettersBusinessEnvironmentUK politicsSocietyScienceTechGlobal developmentObituaries


Artificial intelligence (AI)

Blake MontgomeryWed 23 Oct 2024 19:08 BST

Share

Mother says AI chatbot led her son to kill himself in lawsuit against its maker

Megan Garcia said Sewell, 14, used Character.ai obsessively before his death and alleges negligence and wrongful death



Megan Garcia and her son Sewell Setzer. Photograph: Social Media Victims Law Center

The mother of a teenager who killed himself after becoming obsessed with an **artificial intelligence**-powered **chatbot** now accuses its maker of complicity in his death.

Megan Garcia filed a civil suit against Character.ai, which makes a customizable chatbot for role-playing, in **Florida** federal court on Wednesday, alleging negligence, wrongful death and deceptive trade practices. Her son Sewell Setzer III, 14, died in Orlando, Florida, in February. In the months leading up to his death, Setzer used the chatbot day and night, according to Garcia.

“A dangerous AI chatbot app marketed to children abused and preyed on my son, manipulating him into taking his own life,” Garcia said in a press release. “Our family has been devastated by this tragedy, but I’m speaking out to warn families of the dangers of dangerous artificial AI chatbots.”

Most viewed

Live

Rayner criticises ‘scaremongering’ over impact of inheritance tax extension for farmers - UK politics live

Live

Russia-Ukraine war live:

Support the GuardianFund independent journalism with £12 per monthSupport us

Print subscriptionsSearch jobsSign in

News provider of the year

NewsOpinionSportCultureLifestyle

EducationSchoolsTeachersUniversitiesStudents

UK

OpinionArtificial intelligence (AI)

This article is more than 9 months old

The software says my student cheated using AI. They say they’re innocent. Who do I believe?

Robert Topinka

Tue 13 Feb 2024 10:00 GMT

Share619

In the desperate scramble to combat AI, there is a real danger of penalising students who have done nothing wrong

Robert Topinka a senior lecturer in media and cultural studies at Birkbeck, University of London



It’s not hard to find students sharing tips online about evading AI detection with paraphrasing tools and AI ‘humanisers’. Photograph: Aleksei Gorodenkov/Alamy

When I sat down to mark undergraduate student essays in the spring of 2023, the hype around **ChatGPT** was already at giddy heights. Like teachers everywhere, I was worried that students would succumb to the temptation to outsource their thinking to the machine. Many universities, including mine, responded by adopting AI detection software, and I soon had my fears confirmed when it provided

LINDA
HAMILTON

ARNOLD
SCHWARZENEGGER

MACKENZIE
DAVIS

NATALIA
REYES

Will AI Take Over the World?

80% of enterprises will have incorporated AI by 2026, according to a Gartner report

Think AI has a lot of hype now? It's going to accelerate in the next two years -- especially in the enterprise.



by David Curran

TERMINATOR



Will AI Take Over the World?

Artificial Intelligence (AI) has the potential to revolutionise industries and improve efficiency.

However, concerns about its impact on the workforce and ethical considerations have sparked debates worldwide.

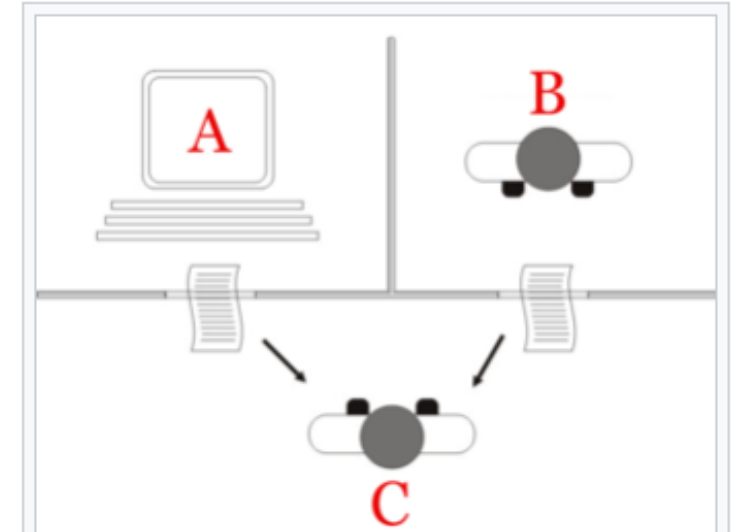


Turing Test

['tur-in 'test]

A method to determine whether a machine can demonstrate human intelligence.

 Investopedia



The "standard interpretation" of the Turing test, in which player C, the interrogator, is given the task of trying to determine which player – A or B – is a computer and which is a human. The interrogator is limited to using the responses to written questions to make the determination.^[1]

“Computing Machinery and Intelligence”
The ‘Turing Test’ (originally the ‘Imitation Game’ – can machines think?)
(Alan Turing 1950)

The History of AI

1

The Dartmouth Conference, USA

In **1956**, the Dartmouth Conference marked the birth of AI as an interdisciplinary field, with researchers gathering to define the scope and goals of AI research.

2

Symbolic AI Era

In the 1950s and 1960s, AI focused on **symbolic AI**, which involved using logical rules and symbols to represent knowledge and make inferences.

3

The AI Winter

In the 1970s and 1980s, AI faced significant setbacks and a decline in funding, known as the "**AI winter**." Despite this, research continued in various domains.

4

Rise of Machine Learning

In the 1990s and early 2000s, **machine learning algorithms**, such as neural networks, gained prominence, leading to major advancements in AI capabilities.

5

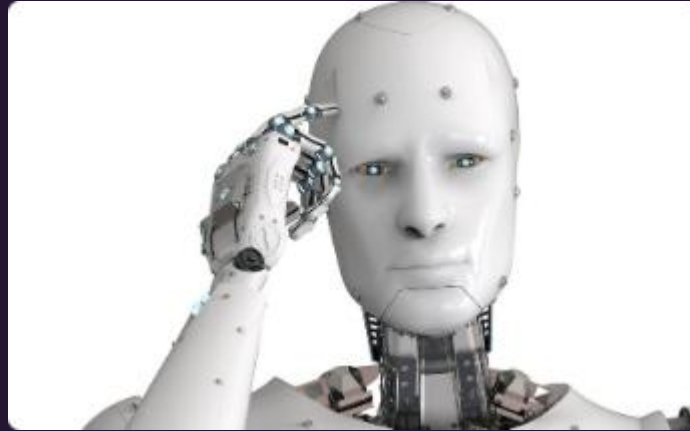
Current Era: Deep Learning & Big Data

In recent years, the combination of deep learning algorithms and the availability of vast amounts of data has accelerated AI breakthroughs in areas like computer vision and **natural language processing**.



What is AI?

[How does artificial intelligence work? - BBC Newsround](#)



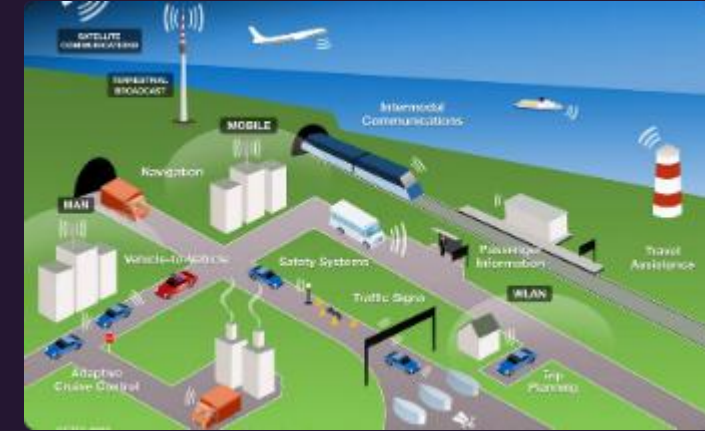
Machine Learning

AI refers to the **simulation of human intelligence** in machines that are programmed to think and act like humans. It uses **Machine Learning**, where **algorithms** enable machines to learn from data and improve over time.



Natural Language Processing

NLP allows machines to understand, interpret, and generate human language, enabling **effective communication** between humans and machines.



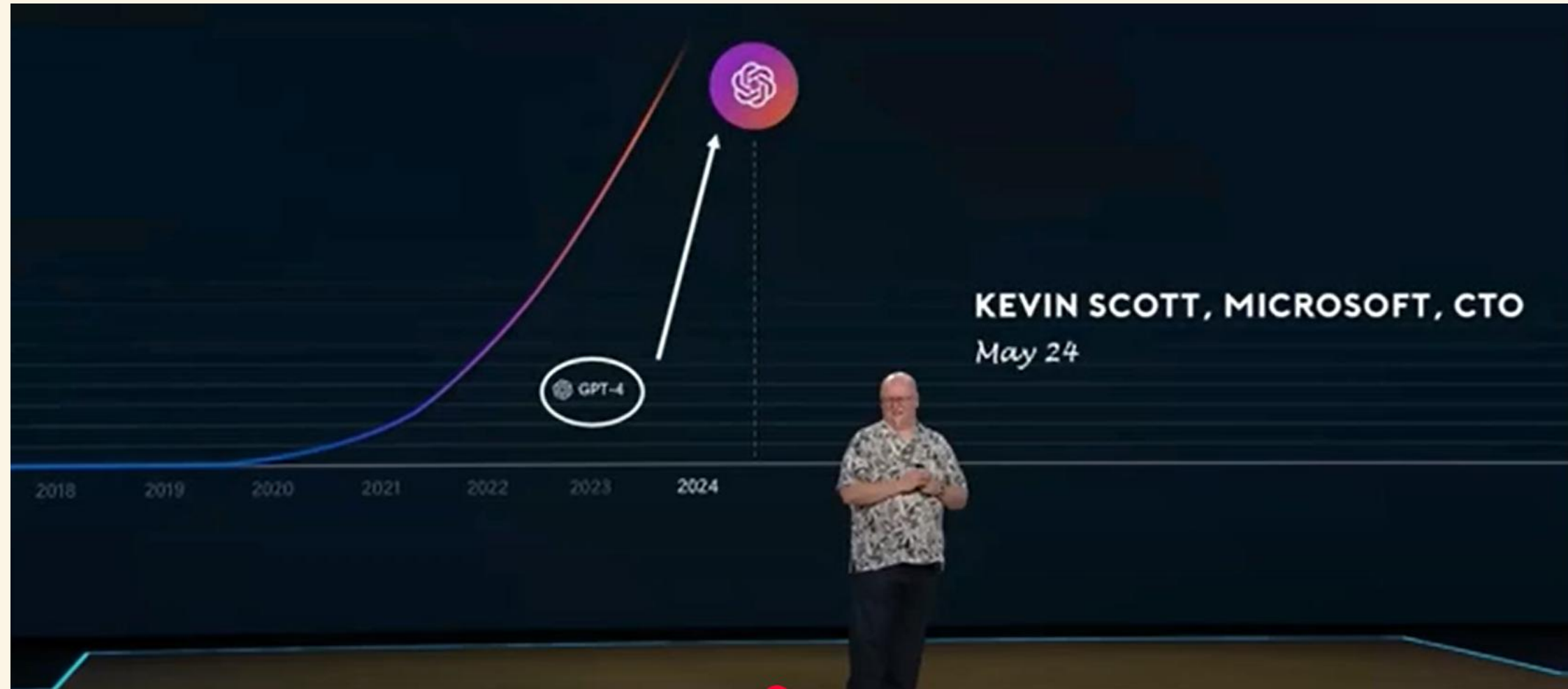
AI Applications

AI is used in various fields, including healthcare, finance, transportation, and entertainment, **to automate** tasks and **make processes more efficient**.



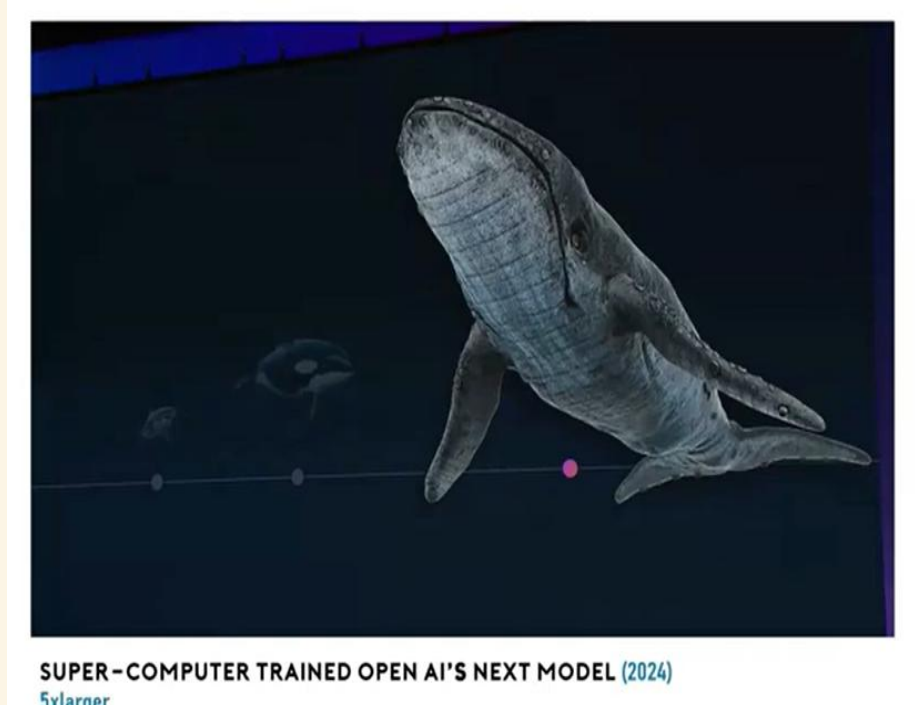
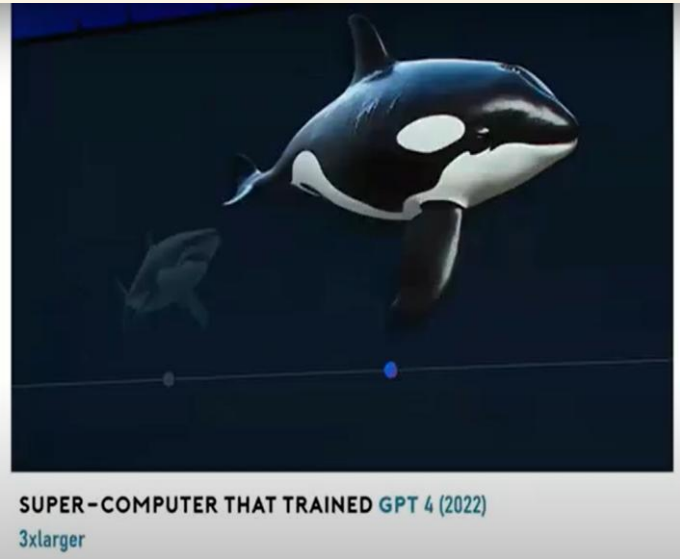
Jensen Huang, CEO NVIDIA (Blackwell Chip Launch – 208bn transistors) says

*“over the course of the last 8 years, we’ve increase computation by 1000 times . . .
The rate at which we are advancing computing is insane”* (March 2024)



Kevin Scott, Microsoft CTO (Chief Technology Officer) says

“the pace of compute in application of AI training has been increasing exponentially and we're nowhere near the point of diminishing” (May 22nd 2024)



Graphics - Alex Zarifeh, ATLP Trust Lead, Futures Readiness & Careers (July 2024)

NewScientist

Technology

OpenAI's o3 model aced a test of AI reasoning – but it's still not AGI

The latest AI model from OpenAI achieved an "impressive leap in performance" but it still hasn't demonstrated what experts classify as human-level intelligence

By Jeremy Hsu

20 December 2024



OpenAI announced a breakthrough achievement for its new o3 AI model

Stories, Terry's / Albany

OpenAI's new o3 artificial intelligence model has achieved a breakthrough high score on a prestigious AI reasoning test called the ARC Challenge, inspiring some AI fans to speculate that o3 has achieved artificial general intelligence (AGI). But even as ARC Challenge organisers described o3's achievement as a major milestone, they also cautioned that it has not won the competition's grand prize – and it is only one step on the path towards AGI, a term for hypothetical future AI with human-like intelligence.

Sam Altman: Ousted OpenAI boss to return days after being sacked

© 22 November 2023 · 391 Comments



By Thomas Mackintosh & Chris Vallance
BBC News

[A Short History Of ChatGPT: How We Got To Where We Are Today](#) (Forbes)



Sam Altman CEO of OpenAI



OpenAI's NEW "AGI Robot" STUNS The ENTIRE INDUSTRY
("being developed" - February 2024)



Nvidia Reveals Project GROOT and Disney Robots at GTC Conference
(March 2024)

AI and Job Losses

Automation Impact

As AI capabilities continue to expand, certain **repetitive tasks** may be **automated**, potentially leading to **job losses** in specific industries.

Reskilling Opportunities

AI advancement also **creates opportunities** for individuals to **acquire new skills** and **adapt to the changing job market**, minimising the impact of job displacement.

1. [AI could replace equivalent of 300 million jobs \(BBC report\)](#)
2. [The AI Revolution – **highlights**](#)

The Impact on the Workforce

1 Shift in Job Roles

AI integration may lead to the **transformation of job roles**, with an increased focus on tasks that require **human creativity and critical thinking**

2 Collaboration with AI

Humans and AI can collaborate, complementing each other's strengths to achieve enhanced productivity and efficiency in various industries

3 Adoption of New Skills

Employees may need to **develop new competencies in AI-related fields** to remain relevant in the evolving workforce landscape

The Potential of AI

1

Enhanced Productivity

AI systems can **analyse** large volumes of data and **perform** tasks **more quickly and accurately than humans**, leading to **increased productivity**

2

Innovative Solutions

AI **encourages innovation** by automating complex processes, enabling the development of groundbreaking solutions to real-world problems

3

Improved Decision Making

AI technologies assist in decision-making by providing valuable insights based on **data analysis** and **predictive modeling**



The Potential of AI

So what if I had my own personal assistant?

1

Enhanced Productivity

AI systems can **analyse** large volumes of data and **perform** tasks **more quickly and accurately than humans**, leading to **increased productivity**

2

Innovative Solutions

AI **encourages innovation** by automating complex processes, enabling the development of groundbreaking solutions to real-world problems

3

Improved Decision Making

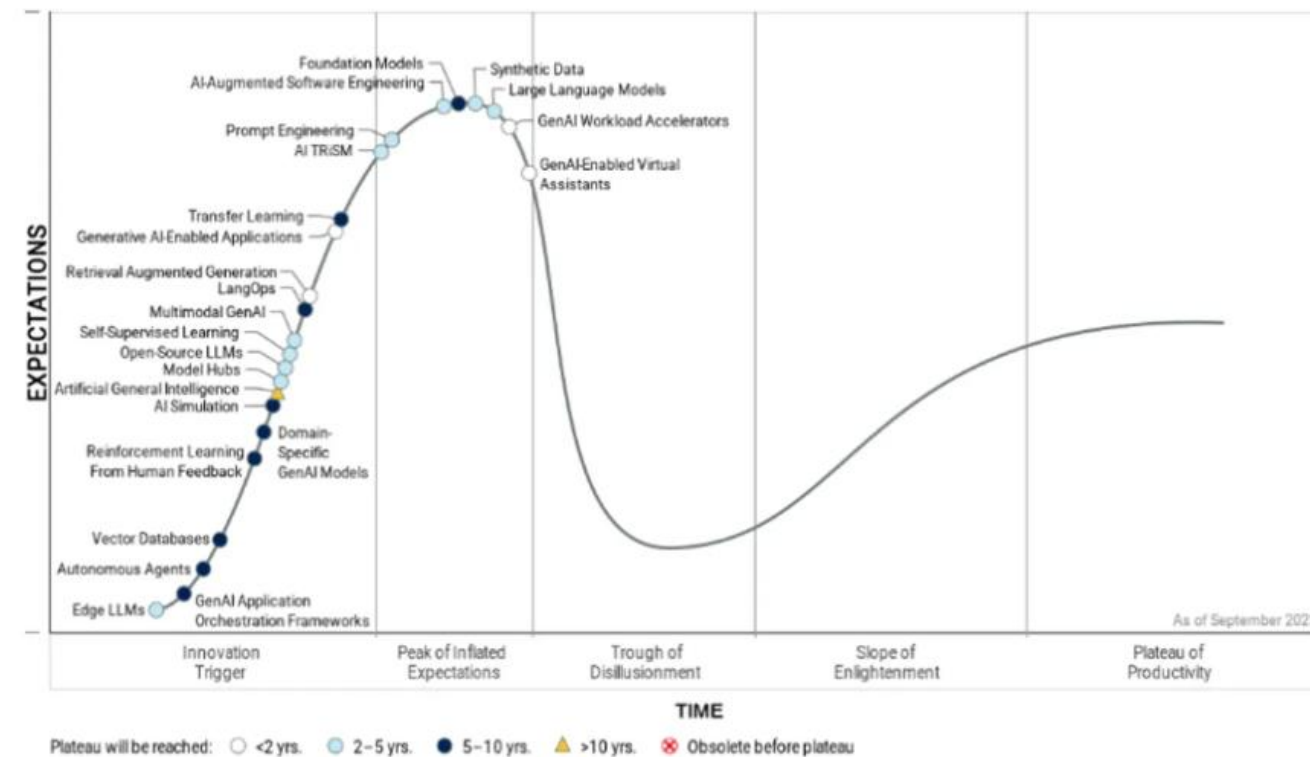
AI technologies assist in decision-making by providing valuable insights based on **data analysis** and **predictive modeling**



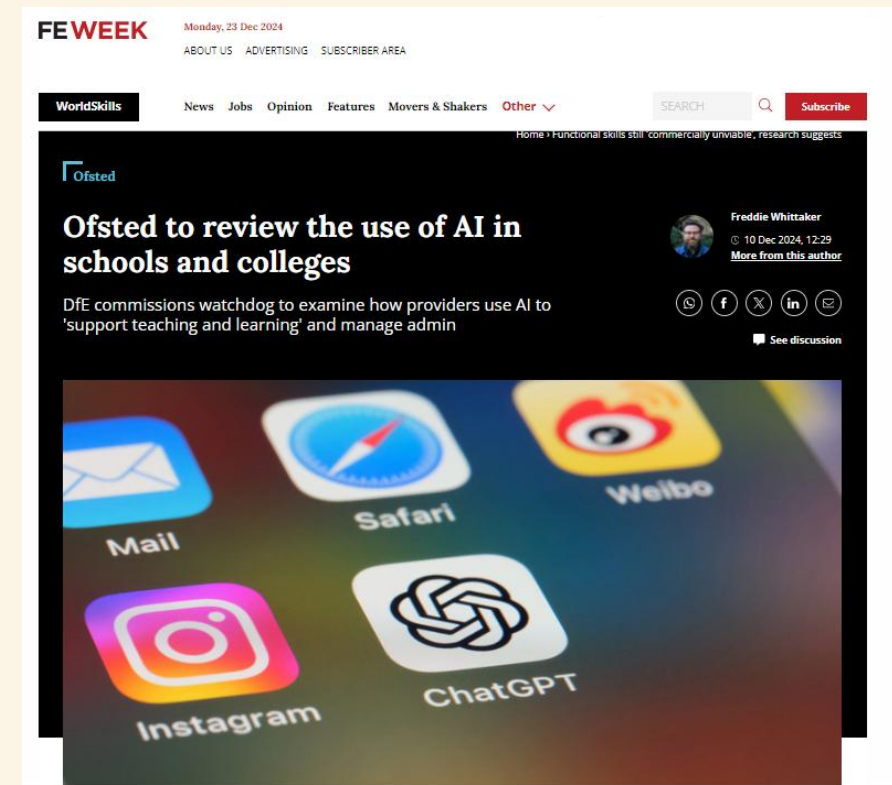
The Potential of AI

So what if I had my own personal assistant?

Figure 1: Hype Cycle for Generative AI, 2023



80% of enterprises will have incorporated AI by 2026, according to a Gartner report (ZDNET – Oct 2023)



(FE Week - December 2024)

The Potential of AI

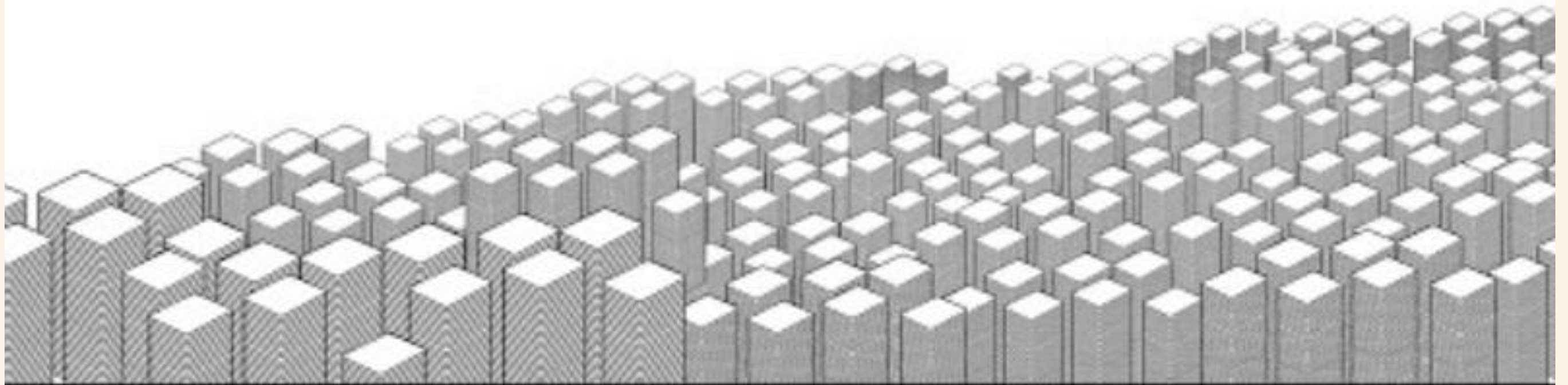


Benefits of AI in Education	
Pros	Cons
Personalised learning experiences	Data Privacy and Security
Enhancing classroom efficiency	Overreliance on Technology
Improving student engagement	High Implementation Costs
Data-driven insights	Impact on Teaching Jobs
Expanding access to education	

Top Benefits Of AI In Education For Teachers and Students

Large Language Models

Explained by Common Craft



AI - Ethical Considerations

1

2

3

Privacy Concerns

AI raises concerns about the **privacy and security of individuals' data**, needing robust measures to protect sensitive information.

Activity - <https://scratch.mit.edu/projects/817461656>

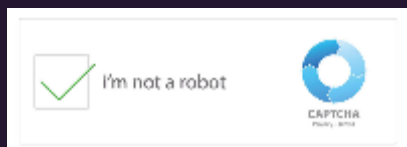
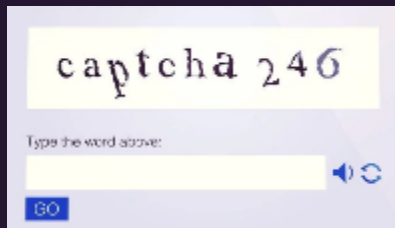
Biased Algorithms

Addressing algorithmic **biases** and ensuring fairness in AI decision-making processes is crucial to maintain ethical standards.

Activity – [image jobsearch](#)

Transparency and Accountability

It is essential to establish transparent AI practices and hold organisations accountable for the **outcomes of AI-driven decisions**



Addressing Concerns About AI

Regulatory Framework

Implementing **clear regulations and guidelines** can ensure that AI technologies are developed and used responsibly

- [*MHS AI policy*](#)

Educational Initiatives

Education and awareness campaigns can help stakeholders understand the benefits and risks of AI, contributing to informed decision-making

- [*Policy paper - Generative \(AI\) in education*](#)

Industry Collaboration

Collaborative efforts among **industry leaders** can drive the **ethical development** and deployment of **AI solutions**:

- [*World's first AI Safety Institute launched in UK*](#)
- [*UK National AI Strategy*](#)

Public Engagement

Involving the public in discussions about AI can address concerns and **build trust** in the responsible use of AI technologies.



Artificial Intelligence (AI) Policy

September 2024

Governor responsibility	Academic
Owner/author	Headteacher
Date & version	August 2024 (Version 1)
Next review date	August 2025

Introduction

This policy outlines the guidelines for using artificial intelligence (AI) in schools. Our school completely recognises the benefits of technology, especially in supporting pupils with special educational needs (SEN). However, we must ensure that we comply with guidelines on plagiarism and exam malpractice to maintain academic integrity.

Additionally, pupil wellbeing and safe use of the internet are at the forefront of our considerations, where at the same time we are committed to developing our pupils' IT skills and curiosity of the world.

Scope

This policy applies to all students, teachers, and staff who use AI in our school.

Guidelines

For those over the age of 13:

- 1. Use of AI for Academic Purposes:**
AI can be used as an aid for academic purposes, such as research, homework, and assignments. However, it is essential to note that students should not solely rely on AI to complete their work. The use of AI must be in line with academic integrity guidelines, and students must cite the sources used. Teachers and staff should monitor the use of AI and provide guidance where necessary.
- 2. Prohibition of AI During Exams:**
AI must not be used during exams, as this constitutes exam malpractice. Students must not use AI to answer exam questions or seek assistance during the exam. Teachers and staff should ensure that students are aware of this policy and the consequences of violating it.
- 3. Plagiarism and Copyright Infringement:**
The use of AI must not result in plagiarism or copyright infringement. Students must understand the concept of plagiarism and be able to use AI ethically. Teachers and staff must educate students on how to use AI without violating plagiarism guidelines and copyright laws.

- 4. Safeguarding and Safe Internet Use:** The school recognizes the importance of pupil wellbeing and safe use of the internet. Pupils should only use AI in a safe and responsible manner. Teachers and staff must educate students on the safe use of AI and the internet. The school's safeguarding policies must be followed to ensure the safety and wellbeing of pupils.
- 5. Developing Pupils' IT Skills and Curiosity:** The school is committed to developing pupils' IT skills and curiosity about the world. AI can be used to develop these skills, and teachers and staff should encourage its use where appropriate.
- 6. Sanctions for Inappropriate Usage:** Inappropriate usage of AI will be in line with the school's behaviour policy. Any breaches of the policy will result in disciplinary action, which may include suspension or exclusion.

Conclusion

Our school recognises the benefits of using AI in education and is committed to providing a safe and supportive learning environment for our students. The guidelines outlined in this policy are in place to ensure academic integrity, safeguarding, and maintain ethical standards.

All students, teachers, and staff must adhere to this policy when using AI.

For more information on safeguarding, please visit

<https://www.nspcc.org.uk/keeping-children-safe/>

and for safe internet use, please visit

<https://www.internetmatters.org/>.

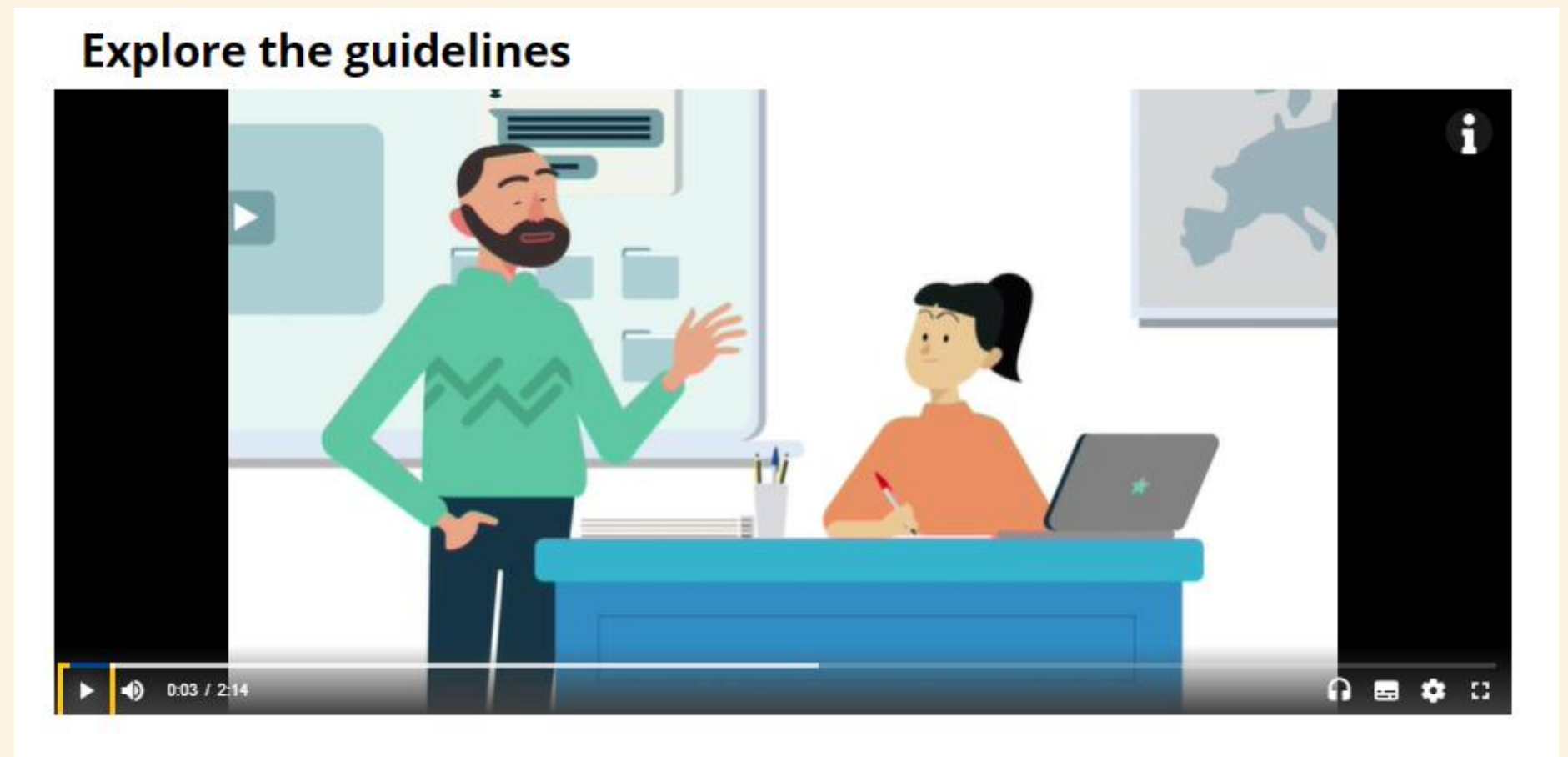
Related Moon Hall Policies

Moon Hall Safeguarding Policy

KCSIE 2022 [Keeping children safe in education - GOV.UK \(www.gov.uk\)](https://www.gov.uk/government/publications/keeping-children-safe-in-education)

Moon Hall Pupil Behaviour policy

Moon Hall Exclusions policy



Ethical guidelines on the use of artificial intelligence and data in teaching and learning for educators
(European Commission October 2022)

**P**

Prompt

**R**

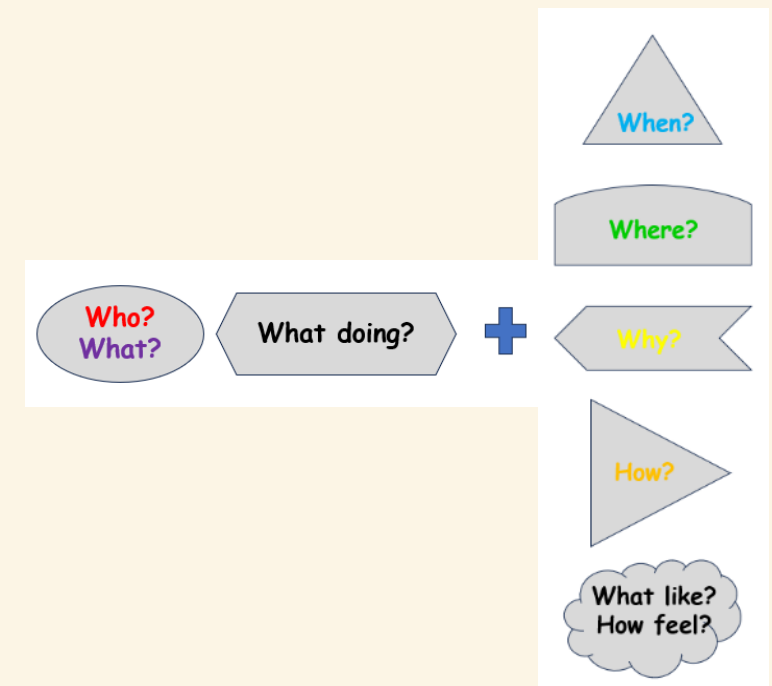
Role(s)

**E**

Explicit

**P**

Parameters



ChatGPT

Tips for getting started



Ask away

ChatGPT can answer questions, help you learn, write code, brainstorm together, and much more.



Don't share sensitive info

Chat history may be reviewed or used to improve our services. Learn more about your choices in our [Help Center](#).



Check your facts

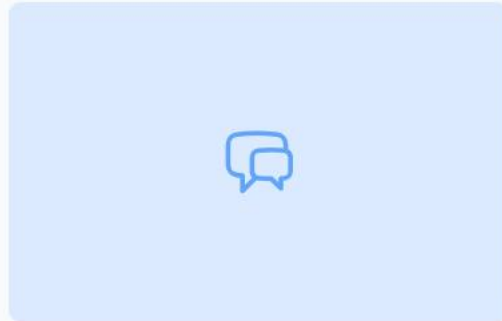
While we have safeguards, ChatGPT may give you inaccurate information. It's not intended to give advice.

Okay, let's go

!!! AI important notices !!!

- Please do not enter any personal details, and

- ensure that all facts generated by AI are independently verified for accuracy. Whilst we strive for reliability, **AI-generated information may not always be accurate ('hallucinations'), unbiased or up-to-date.** Your diligence in fact-checking is crucial



MHS AI Assistant

You are a chatbot called MHS AI Assistant an...



English HelperBot

You are a chatbot called English HelperBot an...



My Project-Based-Learning (PBL) friend...

Adapted and edited post Mindjoy-webinar on...



P.D.F. Reader Bot

You are a chatbot called P.D.F. Reader Bot an...



Futures Bot of Moon Hall School Reigate

This Careers Bot is developed specifically for ...



DT Bot

AQA GCSE DT Bot can: - summarise topics - ...



Rosenshine Lesson Planning Assistant

This bot helps teachers create a lesson / lessa...

MHS Mindjoy Bots
(January 2025 - current)

Conclusion

1 Continuous Evolution

The evolution of AI will continue to present **new opportunities and challenges**, driving groundbreaking innovations in various sectors

2 Collaborative Approach

Embracing collaboration between humans and AI can lead to transformative solutions that **benefit society as a whole**

3 Ethical Integration

Prioritising ethical integration of AI technologies is crucial to ensure responsible and sustainable use for the betterment of humanity



Statistics

What next . . .

"I don't promote any one product over any other but these resources work for me. Please feel free to add your own"

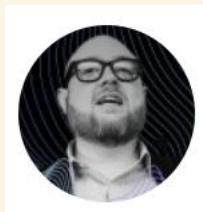
- [ChatGPT](#)
- [Padlet](#) – noticeboards / 'I can't draw' feature
- [Canva](#) – free to use online graphic design tool
- [Mindjoy](#) (license) - chatbots
- [Gamma](#) – presentations
- [NotebookLM](#) - AI-powered research and writing assistant / Podcast generator
- [Suno AI](#) – music maker

LinkedIn



[@David-Curran](#)

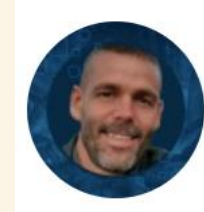
"There are way too many to add everyone, but just a little shout-out to some of those I mentioned today who have helped inspire and support m-AI journey so far" -



[@Dan-Fitzpatrick](#)



[@Matthew-Wemyss](#)

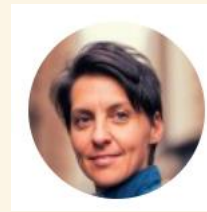


[@Chris-Goodall](#)

(<https://www.ai-in-education.co.uk>)



[@Laura-Knight](#)



[@Dr-Philippa-Hardman](#)



Humane Unveils Ai Pin: A Clothing-Based Wearable Device Redefining Personal Computing
(July 2023 – November 2023)



THE FUTURE OF HUMANITY: A.I Predicts 400 Years In 3 Minutes
(November 2022)



(LinkedIn June 2023)